

APPLIED[®] SYSTEMS USA

Series HF – Hollow Fiber Ultrafiltration (UF) Systems

10 to 3,000 GPM • Engineered Systems to 150 MGD

Advantages of Ultrafiltration

- Low fouling membrane modules
- Excellent filtration performance with high flux
- High chemical resistance and temperature tolerance for effective membrane cleaning
- Very fine nominal pore diameter (0.02 μm)
- High removal efficiency of bacteria & viruses
- Dead-end or concentrate bleed flow capabilities
- Can be periodically back washed and air scoured to improve performance and extend operating life by removing the fouling layer
- Simple, vertical, modular design allows low cost, compact systems
- UF Outside-In or Inside-Out Configuration allows for less plugging and higher solids loading, higher flow area and easier cleaning



Key Features

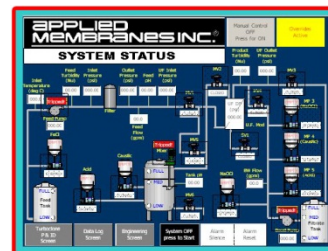
- 38 years of experience is reflected in our quality
- Heavy duty powder coated corrosion resistant frame
- SS High pressure components, SS Pump
- Touch Screen PLC Operation
- Conservatively engineered for reliable long term performance
- Factory tested to ensure trouble-free operation



Applied Membranes' Ultrafiltration UF Systems are Available in either Outside-In and Inside-Out Configurations.

Outside-In configuration UF Systems use DOW UF Low fouling Hydrophilic Polyvinylidene fluoride (H-PVDF) Hollow Fiber Ultrafiltration Membranes.

Inside-Out configuration UF Systems use Inge dizzer[®] XL Low fouling Hydrophilic MPES Hollow Fiber Ultrafiltration Membranes. Dizzer XL UF Membranes are provided with Multibore[®] technology for superior membrane integrity (robust membrane).



APPLIED MEMBRANES INC.[®]

Industry Leader in RO Expertise and Membrane Applications Since 1983[™]



Phone: (760) 727-3711 • Fax: (760) 727-4427 • www.appliedmembranes.com • sales@appliedmembranes.com

APPLIED[®] SYSTEMS USA

Series HF – Hollow Fiber Ultrafiltration (UF) Systems

10 to 3,000 GPM • Engineered Systems to 150 MGD

Ultrafiltration (UF) Systems come complete and are skid mounted. These systems are tested before shipment.

Standard Equipment

- Self-cleaning automatic pre-filter(s)
- Hollow Fiber UF Membrane Modules
- Automatic valves for feed backwashing
- 316SS Feed pump with VFD
- Solenoid valve for air scour for O/I UF (Air compressor optional)
- Chemical injection pumps (3)
- pH transmitter
- Flow transmitters: Filtrate and Backwash
- Pressure gauges with transmitters (4)
- 316SS Backwash pump with VFD
- PLC Operator Interface

Ordering Information

Inside-Out Model No.	Outside-In Model No.	System Capacity			Membrane Elements	Line Sizes (NPT, Inches)			System Dimensions (in/cm)			Approx. Shipping Weight (Lb/Kg)
		GPM	GPD	m ³ /hr		Inlet	Filtrate	Backwash	Length	Depth	Height	
HF60-11	HF60-11E	10	14,4000	2.3	1	1.5	1.5	1.5	60/152	30/76	76/193	1,000/454
HF60-41	HF60-41E	40	57,600	9.0	4	4	4	4	80/203	30/76	76/193	1,500/680
HF60-101	HF60-10E	100	144,000	22.7	10	4	4	4	110/279	50/76	114/290	3,000/1,360
HF60-141	HF60-14E	140	201,600	31.8	14	6	6	6	140/356	50/76	114/290	4,200/1,905
HF60-181	HF60-18E	180	259,200	40.9	18	6	6	6	180/457	50/76	114/290	5,500/2,495
HF60-221	HF60-22E	220	316,800	50.0	22	6	6	6	220/559	50/76	114/290	6,300/2,858

Optional Equipment

- Holding tanks for feed, backwash and filtrate
- Chemical tanks for chemical injection
- Air compressor for air scour
- Clean-in-Place system (CIP)

Notes

- All dimensions and weights are approximate.
- Based on 77 deg. F (25 deg. C.) operating temperature + or – 10 Deg. F (please advise if temperature is out of this range)
- Operating maximums: 75 PSI applied pressure; 20 PSI transmembrane pressure; 300 NTU of instantaneous turbidity; 200 PPM chlorine @ 200,000 PPM hours (< 50 NTU, typical)
- Capacity basis: 24 hour

Voltage/ Ordering Information

Please add our voltage codes to the end of the model number when ordering.

Example: HF60-22E-236 = 220/230v / 3 ph / 60 hz

Voltage Codes:

- **236** = 220 or 230v/ 3ph/ 60hz
- **436** = 460 or 480v/ 3ph/ 60 Hz
- **235** = 220v/3ph/50hz
- **335** = 380v/3ph/50 Hz

Single Phase Not Available



APPLIED MEMBRANES INC.[®]

Industry Leader in RO Expertise and Membrane Applications Since 1983™



Phone: (760) 727-3711 • Fax: (760) 727-4427 • www.appliedmembranes.com • sales@appliedmembranes.com