

Product range  
PVC-U

Ball valve type 375  
metric, BS, ASTM



Distributed By:

**APPLIED  
MEMBRANES INC.®**

Industry Leader in RO Expertise and Membrane Applications since 1983™

2450 Business Park Dr., Vista, CA 92081 ☎ (760) 727-3711 📠 (760) 727-4427  
🌐 [www.appliedmembranes.com](http://www.appliedmembranes.com) ✉ [sales@appliedmembranes.com](mailto:sales@appliedmembranes.com)

**+GF+**

**GEORG FISCHER  
PIPING SYSTEMS**

# List of Abbreviations

---

ASTM	American Society for Testing and Materials
BS	British Standard
DIN	Deutsches Institut für Normung e.V.
EN	Europäische Norm
ISO	International Standardization Organization
PVC-U	Polyvinyl chloride, unplasticized
PE	Polyethylene
EPDM	Ethylene-Propylene-Rubber
FPM	Fluororubber, e.g. Viton®
PTFE	Polytetrafluoroethylene, e.g. Teflon®
d	Pipe outer diameter
DN	Nominal diameter
PN	Nominal pressure at 20 °C, water
kg	Weight in kilograms
®	Registered trademark

The technical data are not binding and not expressly warranted characteristics of the goods. They are subject to change. Our General Conditions of Sale apply.

## **Dimensions**

All dimensions are given in mm.

# The new ball valve type 375

With the Type 375 ball valve, GF Piping Systems now have a new addition to their existing ball valve range. The ball valve 375 is ideally suited for basic applications encompassing the water processing/treatment sector, as well as other applications involving water.






## Features:

- Material PVC-U
- DN10 – DN100
- Pressure rates  
DN10 – DN50 = PN16  
DN65 – DN100 = PN10
- O-Ring Material EPDM / FPM
- Actuator unit not connectable

## The ball valve type 375 conforms to the following international standards:

EN ISO 16135	Industrial valves – Ball valves of thermoplastic materials
ISO 9393	Thermoplastic valves – pressure test methods and requirements
EN 558	Flanged valve dimensions are in accordance with EN 558

## End connectors:

<b>Solvent cement socket</b>	<b>Norm</b>
	ISO, BS, ASTM, JIS
<b>Threaded socket</b>	<b>Norm</b>
	ISO / BS (Rp), ASTM (NPT)
<b>Butt fusion spigot PE100 SDR11 long</b>	<b>Norm</b>
	ISO
<b>PVC-U Flanges</b>	<b>Norm</b>
	ISO (fixed flange), BS (fixed flange), ASTM (backing flange US modified)

Distributed By:

**APPLIED  
MEMBRANES INC.®**

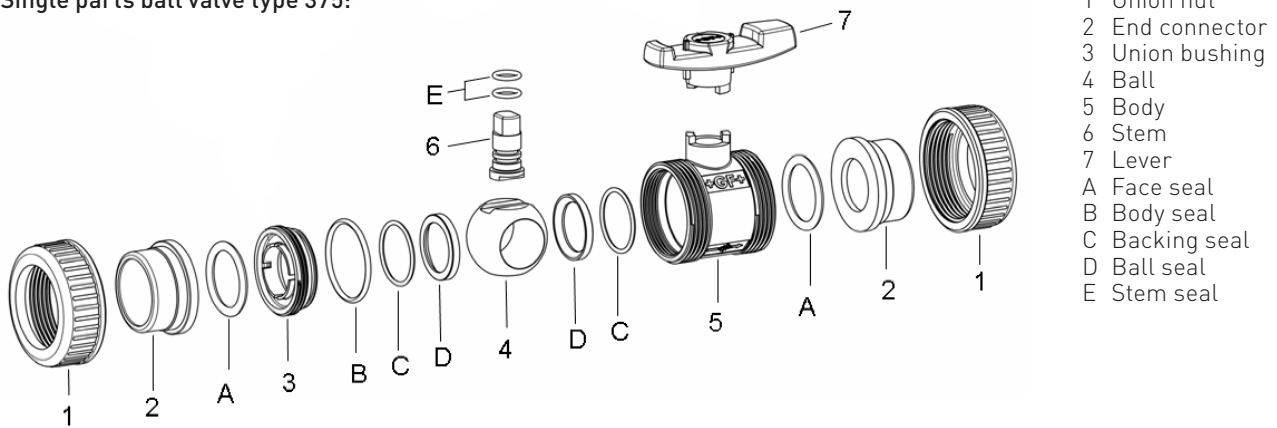
Industry Leader in RO Expertise and Membrane Applications since 1983™

2450 Business Park Dr., Vista, CA 92081 ☎ (760) 727-3711 📠 (760) 727-4427

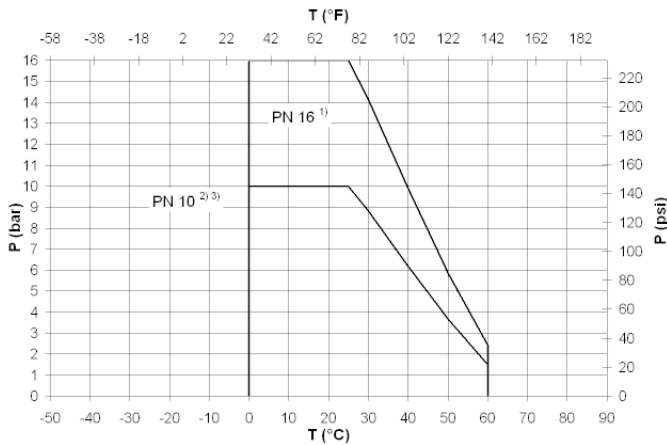
🌐 [www.appliedmembranes.com](http://www.appliedmembranes.com) ✉ [sales@appliedmembranes.com](mailto:sales@appliedmembranes.com)

# Technical features

Single parts ball valve type 375:



Max working pressure:



Comments:

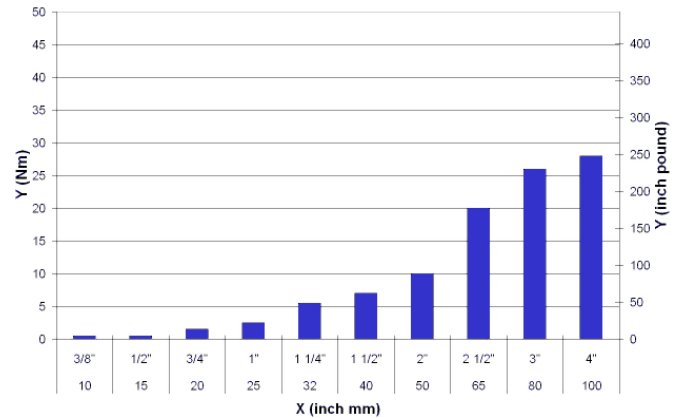
The pressure-temperature diagrams are based on a service life of 25 years and apply to water or similar media.

- 1) For nominal dimensions of DN10 - DN50, the central body of the ball valve is designed for nominal pressure PN16
- 2) For nominal dimensions of DN65 - DN100, the central body of the ball valve is designed for nominal pressure PN10
- 3) Depending on the end connection, at nominal dimensions of DN10 - DN50, the nominal pressure reduces to PN10

p permissible operating pressure in bar, psi

T Temperature in °C, °F

Torque:

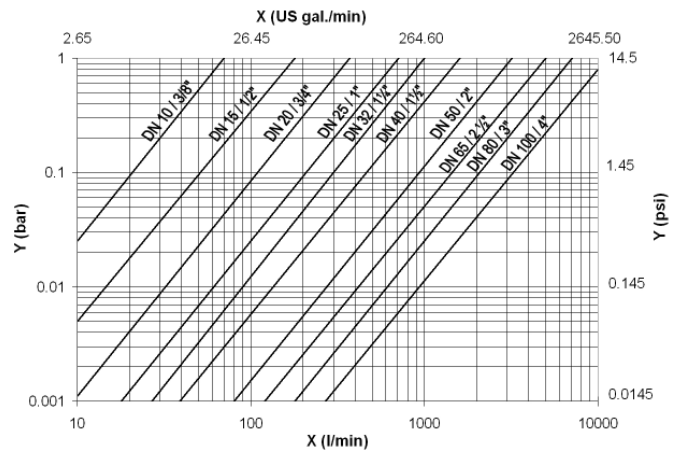


X Nominal width DN (mm, inch)

Y Torque (Nm, inch pound)

Guide values at nominal pressure

Pressure loss:



Medium: Water, 20 °C

X flow rate l/min), (US gal./min)

Y pressure loss  $\Delta p$  (bar), (psi)

Distributed By:  
**APPLIED MEMBRANES INC.**<sup>®</sup>

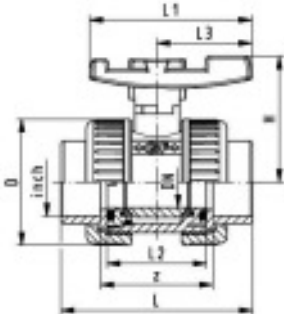
Industry Leader in RO Expertise and Membrane Applications since 1983™

2450 Business Park Dr., Vista, CA 92081 ☎ (760) 727-3711 📠 (760) 727-4427

🌐 www.appliedmembranes.com ✉ sales@appliedmembranes.com

# PVC-U ASTM/ANSI

## Ball valve type 375 PVC-U With solvent cement sockets Inch ASTM Inclusive 2 threaded valve ends NPT



### Range of use

- Basic applications of the water treatment sector as well as other applications involving water.

### Model:

- For easy installation and removal
- z-dimension, valve end and valve nut are not compatible with type 546
- Ball seals PTFE
- Actuator unit not connectable
- Threaded valve ends are only enclosed for DN10/15-50

Inch	DN [mm]	PN	kv-value ( $\Delta p=1$ bar) [l/min]	EPDM Code	FPM Code	kg
3/8	10	16	71	<b>161 375 001</b>	<b>161 375 016</b>	0.130
1/2	15	16	185	<b>161 375 002</b>	<b>161 375 017</b>	0.130
3/4	20	16	350	<b>161 375 003</b>	<b>161 375 018</b>	0.210
1	25	16	700	<b>161 375 004</b>	<b>161 375 019</b>	0.310
1 1/4	32	16	1000	<b>161 375 005</b>	<b>161 375 020</b>	0.450
1 1/2	40	16	1600	<b>161 375 006</b>	<b>161 375 021</b>	0.690
2	50	16	3100	<b>161 375 007</b>	<b>161 375 022</b>	1.200
2 1/2	65	10	5000	<b>161 375 008</b>	<b>161 375 023</b>	2.190
3	80	10	7000	<b>161 375 009</b>	<b>161 375 024</b>	3.360
4	100	10	11000	<b>161 375 010</b>	<b>161 375 025</b>	6.060

Inch	D [mm]	H [mm]	L [mm]	L1 [mm]	L2 [mm]	L3 [mm]	z [mm]
3/8	50	53	76	60	42	40	48
1/2	50	53	80	60	42	40	48
3/4	59	60	91	65	48	45	53
1	68	67	102	75	54	51	58
1 1/4	80	79	120	85	62	59	68
1 1/2	94	90	140	95	72	70	78
2	115	107	169	110	86	84	93
2 1/2	145	129	206	130	110	103	118
3	168	143	242	140	128	120	140
4	210	169	282	160	150	141	160

Distributed By:

**APPLIED  
MEMBRANES INC.®**

Industry Leader in RO Expertise and Membrane Applications since 1983™

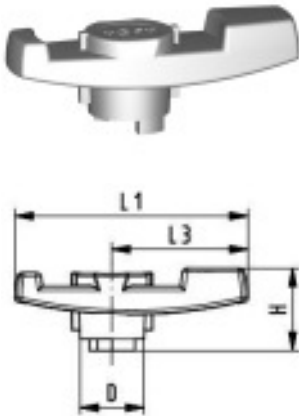
2450 Business Park Dr., Vista, CA 92081 ☎ (760) 727-3711 📠 (760) 727-4427

🌐 [www.appliedmembranes.com](http://www.appliedmembranes.com) ✉ [sales@appliedmembranes.com](mailto:sales@appliedmembranes.com)

## Spare parts

### Handle to type 375 PVC-U Standard handle, orange

Available from 2nd quarter 2007



d-d [mm]	DN-DN [mm]	Code	L1 [mm]	L3 [mm]	H [mm]	D [mm]
16 - 20	10 - 15	<b>161 490 900</b>	67	40	27	19
- 25	- 20	<b>161 490 901</b>	77	45	28	22
- 32	- 25	<b>161 490 902</b>	87	51	32	25
- 40	- 32	<b>161 490 903</b>	102	59	36	28
- 50	- 40	<b>161 490 904</b>	119	70	40	32
- 63	- 50	<b>161 490 905</b>	146	84	45	37
- 75	- 65	<b>161 490 906</b>	179	103	52	41
- 90	- 80	<b>161 490 907</b>	209	120	57	44
- 110	- 100	<b>161 490 908</b>	250	141	61	48

### Seal set 375 PVC-U

#### Model:

- Consisting of ball seals PTFE and o-rings

Available from 2nd quarter 2007



d [mm]	DN [mm]	EPDM Code	FPM Code
16	10	<b>161 375 402</b>	<b>161 375 417</b>
20	15	<b>161 375 403</b>	<b>161 375 418</b>
25	20	<b>161 375 404</b>	<b>161 375 419</b>
32	25	<b>161 375 405</b>	<b>161 375 420</b>
40	32	<b>161 375 406</b>	<b>161 375 421</b>
50	40	<b>161 375 407</b>	<b>161 375 422</b>
63	50	<b>161 375 408</b>	<b>161 375 423</b>
63	65	<b>161 375 409</b>	<b>161 375 424</b>
90	80	<b>161 375 410</b>	<b>161 375 425</b>
110	100	<b>161 375 411</b>	<b>161 375 426</b>

Distributed By:

**APPLIED  
MEMBRANES INC.**<sup>®</sup>

Industry Leader in RO Expertise and Membrane Applications since 1983™

2450 Business Park Dr., Vista, CA 92081 ☎ (760) 727-3711 📠 (760) 727-4427  
 🌐 www.appliedmembranes.com ✉ sales@appliedmembranes.com