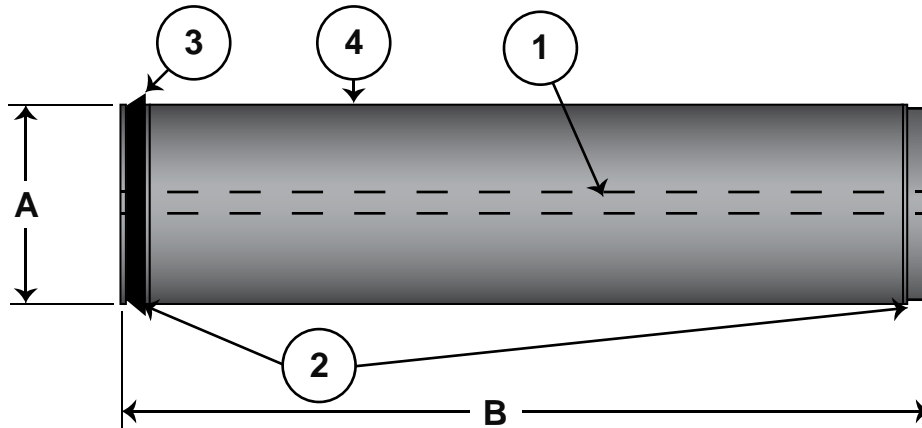


# 7640 UF Membrane

Engineered for Electrocoat Applications



ITEM	DESCRIPTION
1	Permeate Tube
2	ATD
3	Brine Seal
4	Membrane Body

## Description

Model Number: M-U7640VDF-D400  
PVDF Spiral Membrane  
FRP Outer Wrap  
One End Seal — ATDs both ends

## Dimensions

Diameter (A) 7.40" (188 mm)  
Overall Body Length (B) 40.0" (1,016 mm)  
Permeate Tube ID 1.285" (32.6 mm)  
Membrane Area 280 ft<sup>2</sup> (26.0 m<sup>2</sup>)

## Recommended Operating Parameters

Feed 110 - 125 GPM (416 - 473 LPM)  
Inlet Pressure 50 PSI (3.4 bar)  
Outlet Pressure 20 PSI (1.4 bar)  
Permeate Output A/C\* 4.0 - 2.5 GPM (15.1 - 9.5 LPM)  
Max Temperature 120°F (49°C)  
Max pH Range 2-11 operating  
1-12 cleaning

\*Note: Anodic and Cathodic permeate output will vary depending on system design and paint bath chemistry.

