

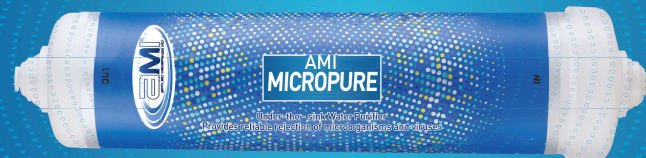


Applied Membranes Inc.
2450 Business Park Drive, Vista, CA 92081
Call: 760-734-8734
www.appliedmembranes.com

**AMI
MICROPURE**

Under-the-sink Water Purifier

PROVIDES
RELIABLE REJECTION OF
MICROORGANISMS AND VIRUSES



UF Membrane Technology



Wash and Rinse Your Mouth
with Microorganisms -free Water

Welcome to **AMI**

Dear Customer,

Congratulations on your purchase and welcome to **AMI**

At the outset, allow us to thank you for your trust in **AMI** Appliances. At **AMI**, we take pride in our reputation for quality products and industry proven performance. We are certain that you will be more than satisfied with **AMI Micropure** performance and that it will serve you and your family's need without any compromise.

This guide will help you in getting the best out of your appliance. Please go through the booklet to familiarise yourself with its operation and maintenance.

Happy Living

Applied Membranes Inc.

TABLE OF CONTENTS

1. Why Use AMI Micropure	1
2. Features of AMI Micropure.....	1
3. Items in the Box	2
4. Ideal Place for Installation	2
5. Tips for Proper Use	2
6. Know Your Product.....	3
7. Installation Instruction.....	4
8. Important Safety Instructions	7
9. Technical Specifications.....	7

WHY USE AMI MICROPURE

The all-new AMI Micropure is designed to provide you and your family with safe, clean and germ-free water from the tap.

FEATURES OF AMI Micropure

1. Best to fit under the wash basin/sink
2. Get protection from harmful micro organisms
3. Compact design easy to install
4. Ultra Filtration with pore size of 0.1 – 0.01 microns
5. Low pressure drop

ITEMS IN THE BOX

- | | |
|------------------------|-------|
| 1. AMI Micropure | : 1 N |
| 2. Pipe 1 Mt. | : 1 N |
| 3. Female Adapter | : 2 N |
| 4. Union Push In | : 1 N |
| 5. Clamp | : 1 N |
| 6. Elbow Reducer | : 2 N |
| 7. Plastic Wall Insert | : 2 N |
| 8. Screw | : 2 N |
| 9. User Manual | : 1 N |

IDEAL PLACE FOR INSTALLATION

AMI Micropure is ideal for installing under:

1. Kitchen Sinks
2. Wash Basins

TIPS FOR PROPER USE

The filter cartridges have a life span of 2 years, depending on consumed water volume, quality and pressure. It must be replaced accordingly. AMI Micropure is best suitable for tap/municipal corporation water supply.

KNOW YOUR PRODUCT



Micropure



Clamp



1 Mt. Plastic Pipe



Elbow Reducer
2 Nos.



Female
Adaptor 2 Nos.

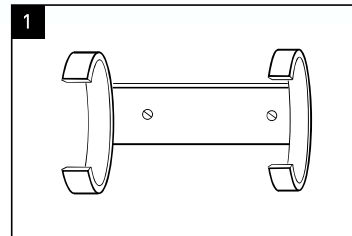


Union
Push In

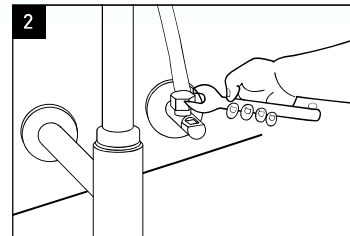
INSTALLATION INSTRUCTION

AMI Micropure can be connected with any type of tap, installed on wash basin or sink with inline water supply.

For Normal / wall-mounting under-the-sink installation

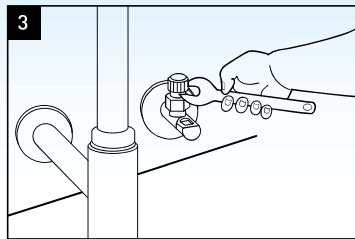


Fix the clamp under-the sink
as shown in fig (10)

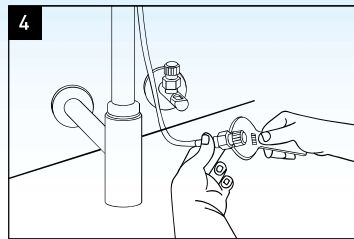


Open the flexible pipe nut from
water supply

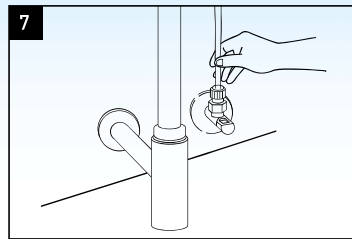
Note: Can not be installed on tap mounted on wall



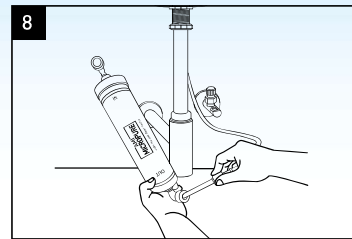
Fix the Female Adapter on wall inlet socket



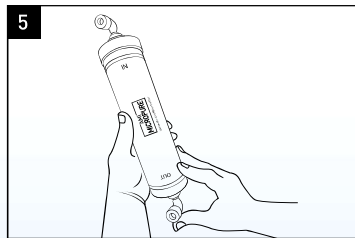
Fix the Union Push In on flexible pipe



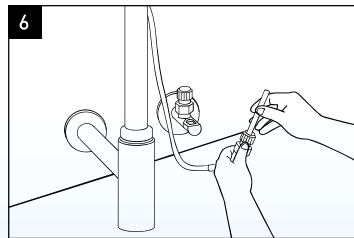
Now, fix required length of plastic pipe into Female Adapter fixed on inlet water supply



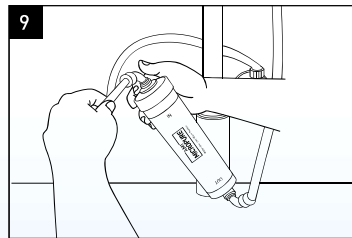
Connect plastic pipe through Elbow Reducer with AMI Micropure (Marked with OUT) to flexible pipe fixed with Union Push In



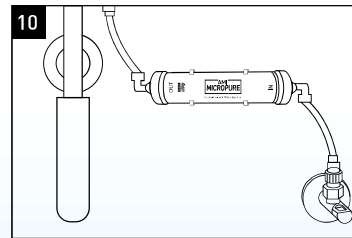
Fix the Elbow Reducer on AMI Micropure



Cut the given plastic pipe as per required length and push one end into Union Push In, fixed already on flexible pipe



Cut the given plastic pipe as per required length and push one end into Elbow Reducer fixed already on AMI Micropure



Fix the AMI Micropure on the clamp

IMPORTANT SAFETY INSTRUCTIONS & PRECAUTIONS

- 1. Do not run water of over 45°C through the purifier.
- 2. The unit is designed to withstand water pressure of up to 72.5 psi

TECHNICAL SPECIFICATIONS

Product	AMI MICROPURE
Product Code	HD-43MP
Mounting	Wall-mounting Under-the-sink
Net Weight	0.81 (lbs)
Casing Material	PP
Product Dimension (Inch)	10.6 (L) x 2.75 (W) x 2.75 (H)
Max. Water Flow Rate	0.26 gal/min (Under standard testing conditions)
Operating Water Pressure (Min/Max)	14.5 psi to 72.5 psi
Operating Temperature (Min/Max)	41 F – 113 F
Filter Material	Hollow Fiber UF Membrane (polysulfone)