

APPLIED[®] SYSTEMS USA

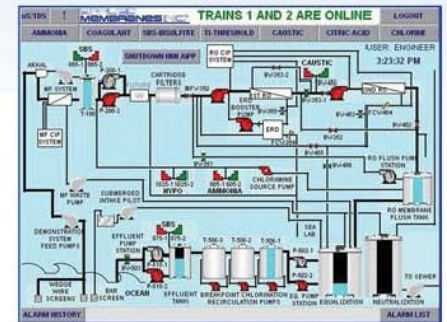
Series S – 2,000 to 132,000 GPD Seawater Desalination Systems

Designed to convert seawater to drinking water, these systems use high quality reverse osmosis seawater desalination membranes. The product water is used in a variety of areas including municipal, hotels, resorts, military, off-shore platforms, and various industrial applications. Designed for the demanding requirements of the marine environment, these systems use our proven technology to give reliable performance.



Key Features

- 38 years of experience is reflected in our quality
- Heavy duty powder coated frame
- Proven components are used throughout the system
- PLC Controlled Operation
- Energy recovery included for models S-128F and larger
- Conservatively engineered for reliable long-term performance
- Factory tested to ensure trouble-free operation



APPLIED MEMBRANES INC.[®]
 Industry Leader in RO Expertise and Membrane Applications Since 1983™



Phone: (760) 727-3711 • Fax: (760) 727-4427 • www.appliedmembranes.com • sales@appliedmembranes.com

APPLIED[®] SYSTEMS USA

Series S – 2,000 to 132,000 GPD Seawater Desalination Systems

Standard Equipment

- Thin Film Composite Membranes
- Stainless steel high pressure pump
- Pressure relief
- Energy recovery for models S-128F and up
- Programmable logic controller (PLC) models S-128F and up
- FRP pressure vessels
- Polypropylene 5M filter housing for up to S-48B FRP housing for larger models
- 316SS high pressure piping and Sch. 80 PVC low pressure piping
- Motorized automatic inlet feed valve
- Antiscalant injection system
- Panel mounted SS flow control valve
- Automatic membrane feed flush with permeate
- *Doubles as a clean-in-place system*
- Low inlet and high outlet pressure switches
- 4) Panel mounted liquid filled pressure gauges: Filter in/out, pump, concentrate
- Panel mounted flowmeters: product & concentrate
- Product TDS with digital display readout
- Cleaning ports
- System on/off with 2-level tank floats
- Heavy duty powder coated aluminum frame

Microprocessor/PLC Controller for Automatic Operation

Monitors and/or Controls:

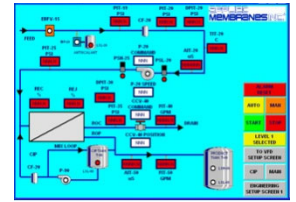
- Inlet valve
- Delayed start-up of high pressure pump
- Permeate water flush at system shut-down
- Low pressure and high pressure switches
- On/Off with storage tank level
- Pre-treatment backwash/lockout
- Permeate TDS
- Feed TDS) and percent rejection
- Water Temperature
- Operating hours
- RO tank full override
- Auxiliary pump or valve control (optional)

Controller Features:

- Backlit LED Display or optional Touchscreen
- Multi-function keypad or optional Touchscreen
- Alarm notification
- Programmable time delays, set-points and flush mode
- Visual indicator alarm light
- Low pressure automatic restart



I-ROC150S Controller



PLC Controller

Optional Equipment

- Stainless steel boost or repressurization pump
- pH monitor for feed or for permeate
- Chemical injection
- Pre-treatment
- ORP monitor/controller
- Turbidity monitor
- UV system, feed or permeate
- Energy recovery (\$98C and smaller)
- PLC with 10" Touchscreen

Ordering Information

Model No.	System Capacity			Membrane Elements		Line Sizes (NPT, Inches)			System Dimensions (in/cm)			Approx. Shipping Weight (Lb/Kg)
	GPM	GPD	m ³ /day	Qty.	Size (Dia. xL)	Inlet	Perm.	Conc.	Length	Depth	Height	
S-24A	1.5	2,000	6	2	4 x 40	¾	¾	¾	100/254	36/92	72/183	1200/545
S-34A	2	3,000	11	3	4 x 40	¾	¾	¾	100/254	36/92	72/183	1285/585
S-44A	3	4,000	15	4	4 x 40	1½	¾	1½	100/254	36/92	72/183	1375/625
S-64B	4	6,000	23	6	4 x 40	1½	¾	1½	134/340	36/92	72/183	1685/765
S-28B	5	7,200	27	2	8 x 40	1½	¾	1½	134/340	44/112	72/183	1805/820
S-38A	8	11,520	44	3	8 x 40	2	¾	2	134/340	44/112	72/183	3550/1610
S-48B	10	14,400	55	4	8 x 40	2	1	2	134/340	44/112	72/183	3790/1720
S-68B	15	21,600	82	6	8 x 40	2	1½	2	134/340	44/112	72/183	4070/1845
S-98C	24	34,560	130	9	8 x 40	3	1½	3	174/442	44/112	72/183	5760/2651
S-128F	32	46,080	174	12	8 x 40	3	2	3	300/762	44/112	72/183	7330/3325
S-188F	47	67,680	256	18	8 x 40	6	2½	6	300/762	44/112	72/183	9475/1575
S-248F	63	90,720	343	24	8 x 40	6	2½	6	300/762	44/112	72/183	12010/5445
S-308F	80	115,200	436	30	8 x 40	6	3	6	300/762	44/112	72/183	13950/6330

Notes and Voltage/ Ordering Information

- All dimensions and weights are approximate.
 - Based on 35,000 ppm seawater at 77°F (25°C). Recovery in the range of 10-40% depending on the system size.
 - Operating pressure 800-1000 psi (57-71 kg/cm²).
 - Seawater intake and supply pump to bring water to the system are not included. Beach well intake recommended.
- Please add our voltage codes to the end of the model number when ordering:** Example: S-14A-236 = 220/230v / 3 ph / 60 hz
- Voltage Codes:
- **236** = 220 or 230v/ 3ph/ 60hz
 - **235** = 220v/3ph/50hz
 - **436** = 460 or 480v/ 3ph/ 60 Hz
 - **335** = 380v/3ph/50 Hz
- Single Phase Not Available

APPLIED MEMBRANES INC.[®]
 Industry Leader in RO Expertise and Membrane Applications Since 1983™



Phone: (760) 727-3711 • Fax: (760) 727-4427 • www.appliedmembranes.com • sales@appliedmembranes.com