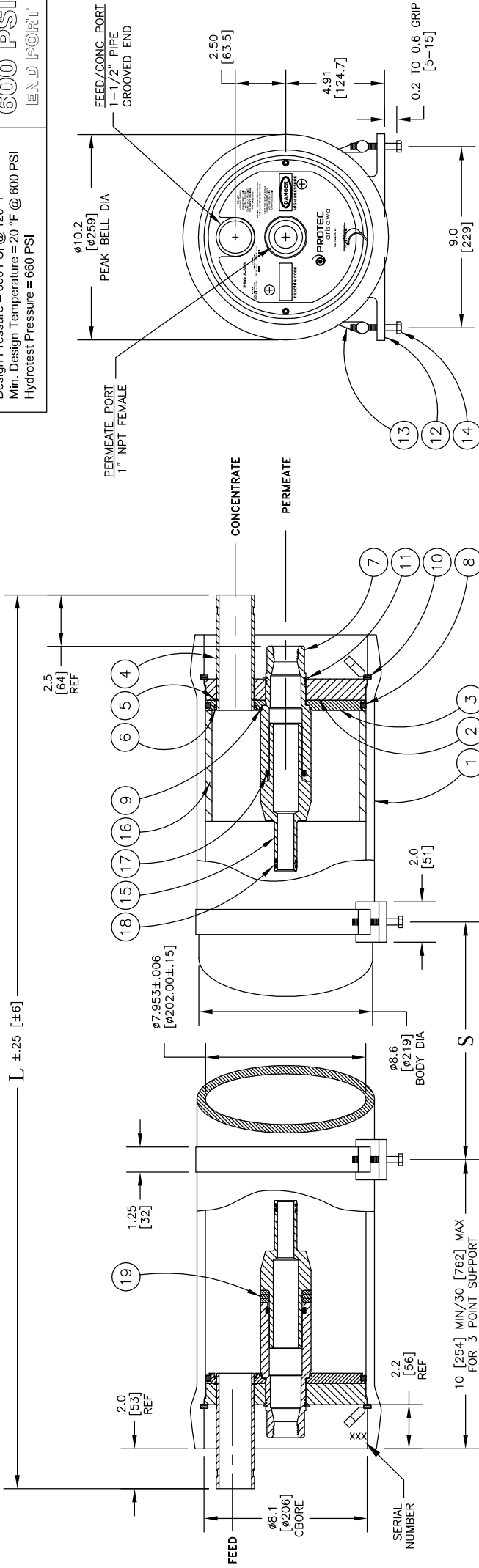


Design Pressure = 600 PSI @ 120 °F  
 Min. Design Temperature = 20 °F @ 600 PSI  
 Hydrotest Pressure = 660 PSI

**600 PSI**  
 END PORT



NOTE: STANDARD PARTS ARE SHOWN FOR REFERENCE ONLY  
 CHECK ORIGINAL ORDER FOR ORDERING SPARE PARTS

ITEM	QTY	PIN	DESCRIPTION	MATERIAL
1	1	4080004	Shell	Filament Wound, Epoxy FRP
2	2	4080031	Bearing Plate	6061-T6 Aluminum, SB-221, Anodized
3	2	4080065-1	Sealing Plate	PVC Thermoplastic
4	2	4080011-1	Feed/Concentrate Port	Stainless Steel, 316, SA-312
5	2	6121187	Retaining Ring, F/C Port	Stainless Steel, 316
6	2	6184604-N	O-Ring Seal, F/C Port	Ethylene Propylene
7	2	4080289	Permeate Port	Noryl GFNZ
8	2	6100442MK	Head Seal	Ethylene Propylene
9	2	6180229-N	Permeate Port Seal	Ethylene Propylene
10	2	4080320	Retaining Ring w/ Finger Pull	Stainless Steel, 316
11	2	6121200	Retaining Ring, Permeate Port	Stainless Steel, 316
12	2*	4080174	Support Saddle	Thermoplastic Rubber
13	2	4080137	Strap Assembly	Stainless Steel, 316
14	4	6150001	Strap Screw	Stainless Steel, 316
15	2	A/R	Adapter	PVC Thermoplastic
16	1	4080109-1	Thrust Ring	PVC Thermoplastic
17	A/R	A/R	Adapter Seal	Ethylene Propylene
18	3	4080062-4	Shim, Adapter	Ethylene Propylene
19				Noryl GFNZ

\*3 each with shell length -7 and longer

NOTES:  
 DIMENSIONS IN INCHES (MM APPROX.)  
 FOR REFERENCE ONLY, NOT FOR CONSTRUCTION UNLESS CERTIFIED

SHIMMING OF THE SADDLES MAY BE REQUIRED  
 CENTER VESSEL ON 2 OR 3 SUPPORTS AT SPAN(S) "S".

INCORRECT MANIFOLDING WILL CAUSE SEVERE LOCAL STRESS AROUND PORT AND MAY RESULT IN LEAKS AND PREMATURE FAILURE. TAKE EVERY PRECAUTION LISTED IN THE ENGINEERING PACKET OR USERS MANUAL.

INTERNAL PERMEATE PRESSURE MUST NOT EXCEED 125 PSI.  
 ASME SECTION X, 2010  
 RP CODE STAMP OPTIONAL

SPECIFICATIONS SUBJECT TO CHANGE WITHOUT NOTICE



**PRO 8-600-EP**

APPROVED  
 LS  
 04/03/12  
 CHECKED

DRAWN  
 BOA  
 04/03/12

ECO  
 12056  
 REVISED  
 04/03/12

DRAWING  
 101010

REV  
 L